

(51)

21
28

Section line between SECS 28 & 21

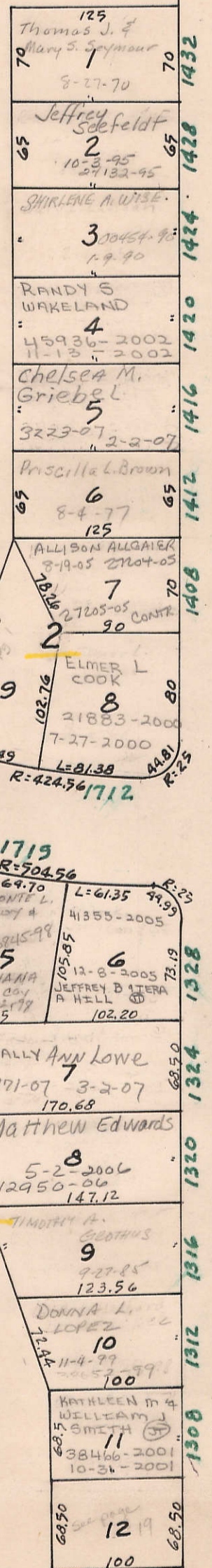
Independent School District of Bettendorf
10-27-55

TRANSFER PAGE 127L-138

HEIGHTS

BROADVIEW

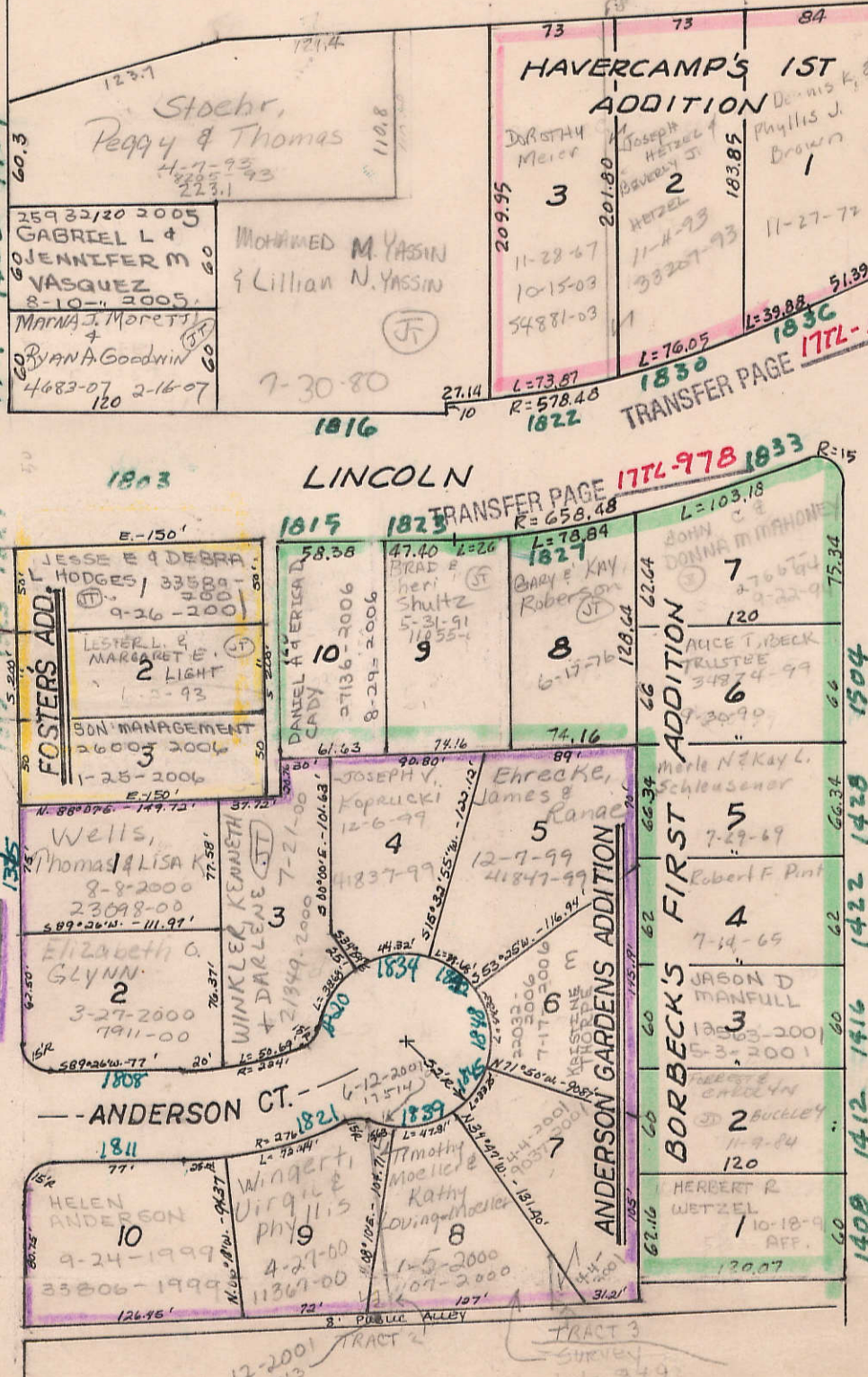
TRANSFER PAGE 127L-136



STREET

18TH

TRANSFER PAGE 235-230S



Chung E. Kim & Soja
11-25-87
TRUSTEES 1/2 UNDIV INT EACH
7035-1998
2-25-1998

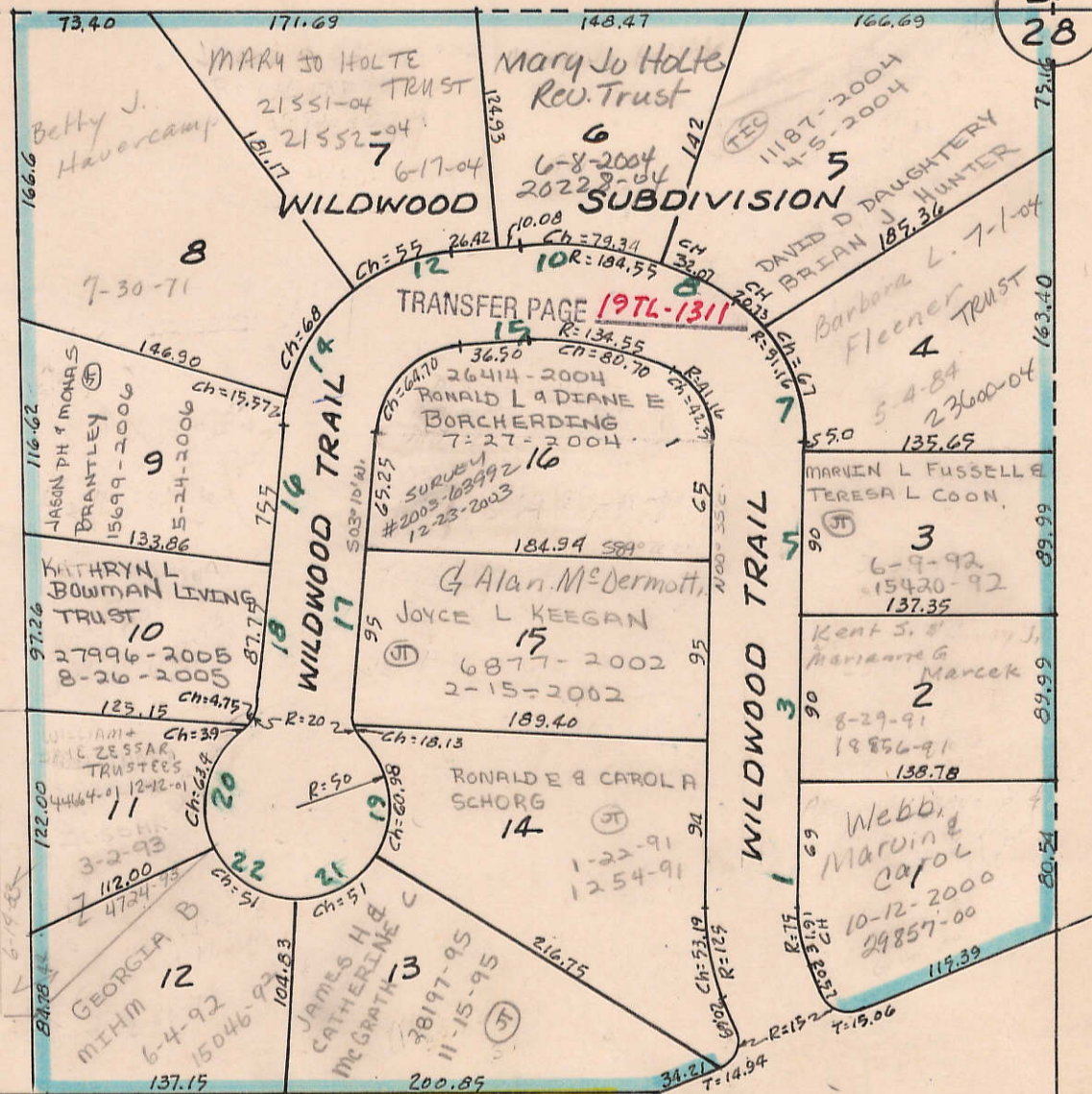
LINCOLN

ANDERSON CT.

STREET

19TH

1405



WILDWOOD TRAIL

WILDWOOD ROAD

TRANSFER PAGE 177L-994

177L-994

1915

TRANSFER PAGE 177L-978, 1033

177L-978, 1033

1915

EDGEMOOD HEIGHTS SECOND ADDN.

EDGEMOOD DRIVE

TRANSFER PAGE 167L-897

167L-897

1913

TRANSFER PAGE 167L-897

167L-897

1913

GLENN STREET

EDGEMOOD HEIGHTS ADDITION

(5)

21ST

SEC 28-78-4

BETT. BK. B, Pg. 3
Pgs. 3, 4, 13 & 14 Old Bk. B
Oct. 1980

Blanks & Partners, L.L.C.
9-7-99
311545799

(19)